



Accu-Tab[®] System Chlorinators 3000 Series Instruction Manual



Certified to
NSF/ANSI/CAN 50

NSF 50 Certified Models:
3008C
3012
3075
3150
3500

Westlake Water Solutions Chlorinators are NSF-Listed for pool and spa applications ONLY when Westlake Water Solutions Accu-Tab Blue or Blue SI Tablets for commercial pool applications are used. *Use of other tablets will void NSF certification.*



Certified to
NSF/ANSI/CAN 61

NSF 61 Certified Models:
3012
3075
3150
3530

ANSI/NSF-Standard 61 Applications use ANSI/NSF Standard 61 listed Westlake Water Solutions Accu-Tab SI Tablets and limit no more than 15 mg/l of tablet addition (or 10mg/l chlorine) to the treated drinking water.

DANGER:

DO NOT MIX CHEMICALS!

The Accu-Tab[®] chlorinators are designed for use with Westlake Water Solutions approved tablets only.

Do not use Cal-Hypo tablets with stabilized chlorine or bromine products, or other sanitizing chemicals.

Fire or explosion could result.

Revised 01-14-2025

Installation – Suction return – Pool Applications

The following installation instructions are for Figure 1 only. Other installations are similar and may require more or less equipment. (NOTE: Model 3500 CANNOT be installed in suction return applications.)

Using the existing circulation pump – Pump must have vacuum on the suction side. – Figure 1.

1. Locate the chlorinator near the pump.
2. Turn off the pump and stop water flow in preparation for cutting the pipe.
3. Install two pipe TEEs as shown in Fig. 1.
4. Install service valves on the supply and return lines to isolate the chlorinator.
5. Using PVC pipe (or flex hose) and appropriate fittings, including a control valve and flow meter, connect the supply line to the chlorinator.
6. Connect the return line in the same manner.
7. Pipe sizes as follows:

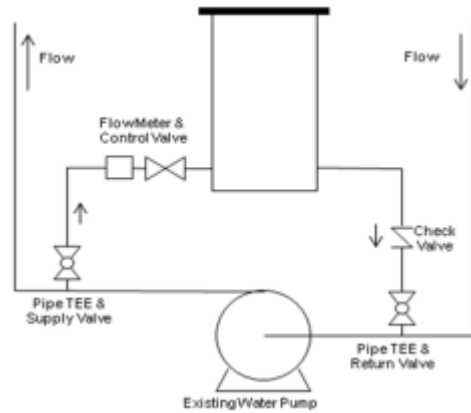
Model	Inlet	Outlet
3008C/3012	¾"	1½"
3075	1"	2"
3150/3500	1½"	3"

8. Restart the pump, open the return service valve FIRST, then open the supply service valve and control valve to establish flow through the chlorinator. Check for leaks.
9. Make sure the sieve plate is in its proper position, resting in the groove.
10. Installation is now complete.

NOTE: For NSF Std 50 applications, an appropriately sized control valve having a minimum of 4 positions and a flow meter must be installed on the chlorinator inlet supply line.

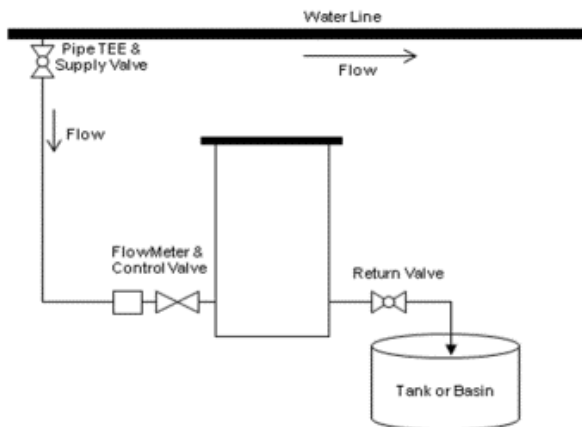
Installation – Suction Return

Figure 1. The following installation instructions are for Figure 1 only. Other installations are similar and may require more or less equipment. (NOTE: Model 3500 CANNOT be installed in suction return applications.)



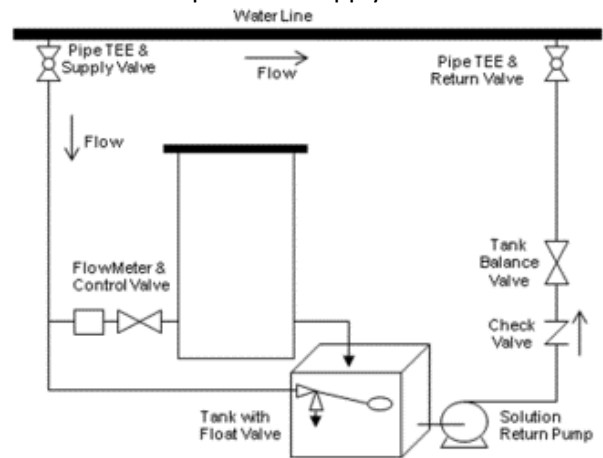
Installation – Atmospheric Return

Figure 2. Include a return valve to allow easier cleaning.



Installation – Pressure Return

Figure 3. Include a pump and check valve, Pump should be capable of required water flow through the chlorinator at the required system pressure. Models 3150 & 3500 require a 2" supply line.



Operation

To refill the chlorinator

1. Isolate the chlorinator. Important: Close the supply valve BEFORE closing the return valve to prevent over-pressurization of the chlorinator.
2. Open the vacuum relief valve (Models 3075 & 3150) to relieve vacuum.
3. Remove the lid. (Be careful not to inhale fumes.)
4. Fill the chlorinator with Westlake Water Solutions Accu-Tab® Tablets.
5. Replace the lid, making sure the surfaces are clean and the O-ring is seated. (Models 3008C, 3012, 3075 & 3150. Use silicone based oil ONLY for lubrication.)
6. Close the vacuum relief valve.
7. Slowly open the return valve first, then the supply valve.

To operate the chlorinator

1. Start flow through the chlorinator.
Important: Open the outlet valve BEFORE opening the inlet valve to prevent over-pressurization of the chlorinator.
2. Adjust the control valve to the desired setting. Check Available Chlorine regularly to determine the best setting.
3. Adjust the control valve and refill the chlorinator as needed to maintain chlorine levels.

Note: When pool circulation stops, flow to the chlorinator will stop. This will stop chlorine delivery.

WARNING: Overdosing of free chlorine can lead to bather irritation (skin, eyes, nasal, etc.).

Cleaning

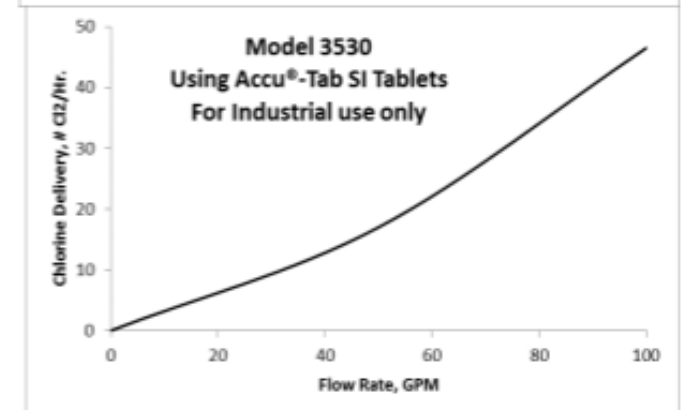
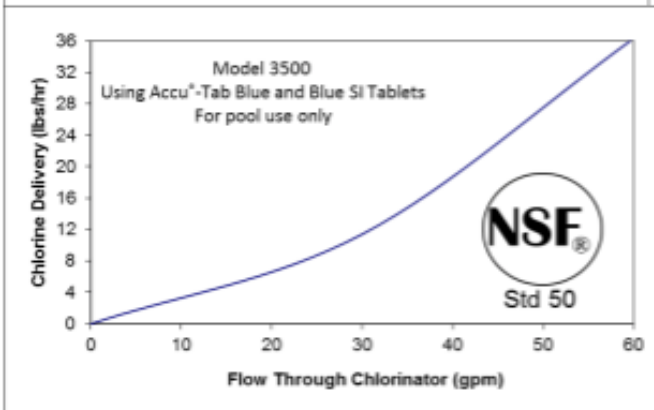
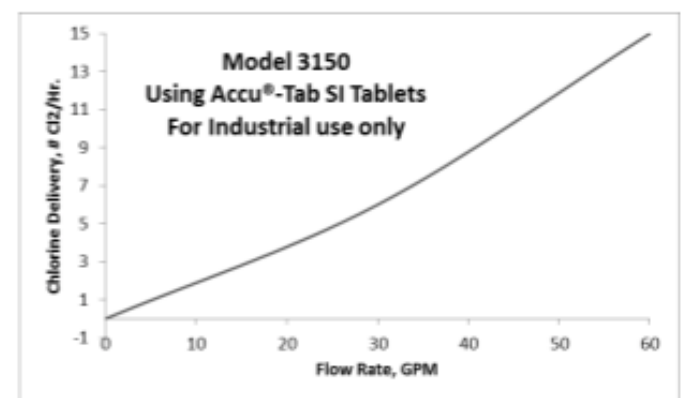
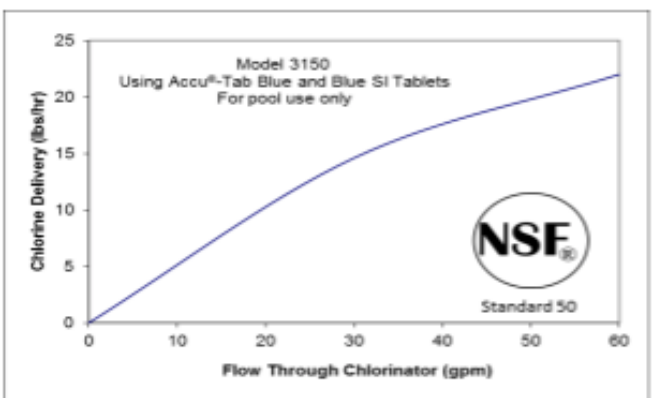
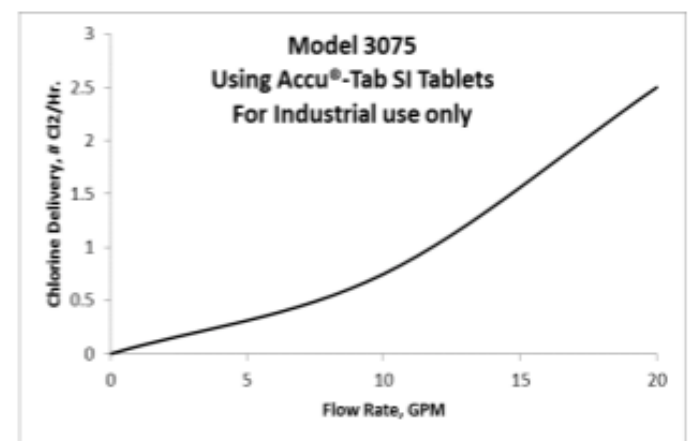
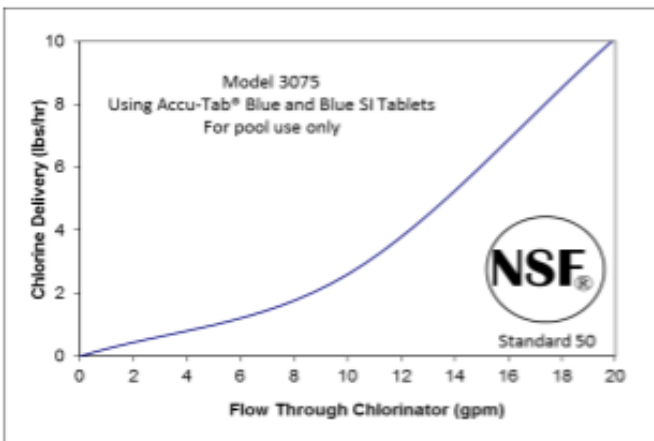
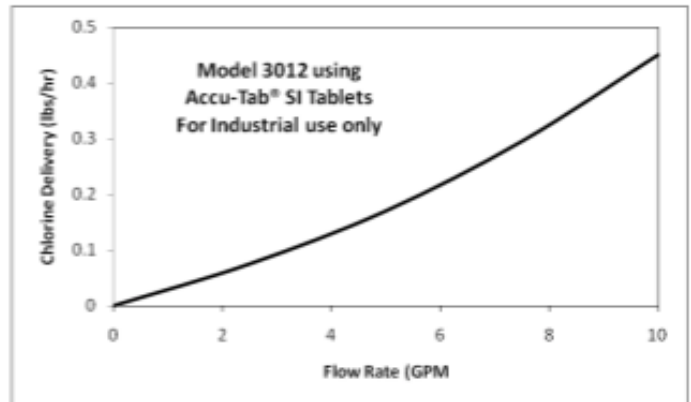
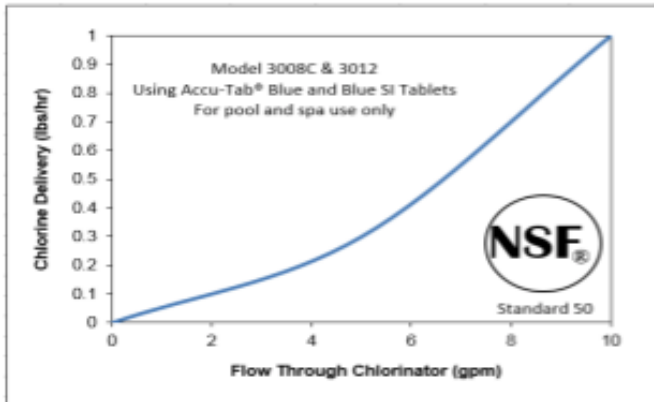
The chlorinator should be cleaned twice per year to remove any residual product that may accumulate inside the unit. Cleaning may be accomplished by soaking in a dilute acid solution. Addition of muriatic acid will lower the pH of the water. Be prepared to add a suitable pH increaser after cleaning is complete.

Preparation for cleaning:

1. Prepare 2 gallons of diluted muriatic acid solution. Wear rubber gloves and rinse all equipment thoroughly when finished.
2. Have a clean, empty container for storage of any tablets inside the chlorinator.
3. Always use appropriate safety equipment while servicing the chlorinator or handling chemicals.

To clean the chlorinator while installed:

1. Isolate the chlorinator from the system by closing both the return and supply valves.
2. Remove the lid and remove all the tablets from the chlorinator. Temporarily place these tablets in the clean, empty container.
3. Rinse the chlorinator with water and (with the lid removed) open the return valve temporarily to drain the chlorinator.
4. Close the return valve and repeat step number 3.
5. Close the return valve and fill the chlorinator with water so there is about one inch of water above the sieve plate. Using rubber gloves and other safety protection, carefully pour the muriatic acid into the chlorinator including the walls of the chlorinator. **ALWAYS ADD ACID TO WATER, NEVER ADD WATER TO ACID.** Leave the lid removed and do not breathe any fumes. Let soak for 30 minutes.
6. After 30 minutes, open the return valve. Open the supply valve and flush the chlorinator for 30 minutes at 10-20 gpm (5 gpm on Models 3008C & 3012).
7. After 30 minutes of flushing, isolate the chlorinator and rinse the walls with water. Drain the chlorinator by temporarily opening the return valve. Rinse a second time and drain.
8. For models 3008C and 3012, rinse off the tablet canister and soak in muriatic acid to remove any residue, making sure all the holes are open. Rinse well with water when finished.
9. Cleaning is now complete.



CAL-HYPO COMMERCIAL SYSTEM LIMITED WARRANTY

Westlake Water Solutions warrants (subject to the below conditions) only its title to this water treatment system equipment (the "System") and that the System will be free of defects in materials and workmanship for a period of eighteen (18) months from its original shipment date.

THIS IS THE ONLY REPRESENTATION OR EXPRESS WARRANTY THAT WESTLAKE WATER SOLUTIONS MAKES AND ALL OTHER EXPRESS WARRANTIES UNDER STATUTE OR ARISING OTHERWISE IN LAW FROM A COURSE OF DEALING OR USAGE OF TRADE WITH RESPECT TO THE SYSTEM ARE DISCLAIMED. ANY IMPLIED WARRANTIES EXISTING AS A MATTER OF LAW SHALL NOT EXCEED THE DURATION OF THIS LIMITED WARRANTY. IN THE EVENT THE SYSTEM FAILS TO CONFORM TO THIS WARRANTY, WESTLAKE WATER SOLUTIONS EXCLUSIVE OBLIGATION AND YOUR EXCLUSIVE REMEDY SHALL BE LIMITED TO, AT WESTLAKE WATER SOLUTIONS OPTION, THE FURNISHING OF NEEDED REPLACEMENT PARTS OR THE FURNISHING OF A NEW SYSTEM (BUT THIS DOES NOT INCLUDE INSTALLATION OR THE COSTS FOR INSTALLATION). EXCEPT AS PROVIDED IN THE IMMEDIATELY PRECEDING SENTENCE, IN NO EVENT WILL WESTLAKE WATER SOLUTIONS BE LIABLE UNDER ANY THEORY OF RECOVERY (WHETHER BASED ON NEGLIGENCE OF ANY KIND, STRICT LIABILITY OR TORT) FOR ANY DIRECT, INDIRECT, SPECIAL, INCIDENTAL, PUNITIVE, OR CONSEQUENTIAL DAMAGES IN ANY WAY RELATED TO ANY USE MADE OF THE SYSTEM.

Warranty Conditions. This Limited Warranty shall apply and be effective only if: (i) the System is installed and operated and maintained in accordance with this manual and the instructions accompanying the System; (ii) you, at your cost, promptly return the System or defective part to such location as may be specified by Westlake Water Solutions; and, (iii) only Westlake Water Solutions Accu-Tab® Blue SI calcium hypochlorite tablets are used in the System. If any of these conditions are not met, this Limited Warranty will not apply and you acknowledge and agree that your purchase of the System will be on an "AS-IS" basis without any warranty of any kind whatsoever having been provided by Westlake Water Solutions.

You assume all responsibility and risk and liability arising from: (i) the unloading, installation, storage, handling and use of the System, including use thereof alone or in combination with other materials; (ii) the improper functioning or failure of unloading, installation, transportation or storage equipment you use, whether furnished or recommended by Westlake Water Solutions or not; and, (iii) the failure to comply with laws, rules and regulations governing storage, unloading, installation, handling, and use of the System. You will indemnify, hold harmless, and defend Westlake Water Solutions from and against any claim, suit, damage, cost, expense, fine, liability, or cause of action whatsoever, including reasonable attorney fees, on account of relating to, or arising out of the use, possession, installation or resale of the System.

This Limited Warranty gives you specific rights, and you also may have other rights, which vary from jurisdiction to jurisdiction. Some jurisdictions do not allow the exclusion or limitation of incidental or consequential damages, so the above limitations or exclusions may not apply to you. Some jurisdictions do not allow limitations on how long an implied warranty lasts, so the above limitation may not apply to you.

©2025 Westlake Water Solutions. Accu-Tab is a registered trademark of Westlake.
Westlake Water Solutions 2801 Post Oak Blvd., Suite 600, Houston, TX 77056 USA
www.westlakewatersolutions.com
Technical Support: 855-934-3570

Disclaimer: The information presented herein is for general informational purposes only. Products are subject to standard terms and conditions of sale, which are available upon request. No warranty, express or implied, including, but not limited to, any warranty of merchantability or fitness for a particular purpose, is made, and any and all warranties on such products are limited to those expressly set forth in the applicable entity's standard terms and conditions. Any reliance the user places on the information presented here is strictly at the user's own risk.

3033 0125