



PurAqua Products, Inc.
1880 Langston Street
Rock Hill, SC 29730
(803) 790-7100

www.puraquaproducts.com

How to Install Overflow Protection Switch Retro Kit on Accu-Tab® Chlorinators

Materials:

1. Drill
2. 3/4" hole saw or unibit
3. 1/2" MPT tap
4. Teflon tape
5. Wire strippers
6. Small or precision screwdriver
7. 7/8" hole saw (for conduit fittings)
8. Tape measure
9. Pliers or adjustable wrench

Instructions:

1. Using the $\frac{3}{4}$ " hole saw or unibit, drill two $\frac{3}{4}$ " holes into the chlorinator tank. Hole distances from bottom of tank: 11" and 14" on Accu-Tab® 1030; 17" and 21" on Accu-Tab® 3070 and 3140.



2. Tap holes with $\frac{1}{2}$ " NPT tap. Be careful to drill and tap the holes straight. Remove any debris from the tank when finished.



- Using Teflon tape, tape and install the two level switches in the tapped holes. The top switch hangs down or open, and the lower switch hangs straight or closed.



- Install bushing in conduits if not already installed. Pull the wire of one switch through each conduit and twist conduits onto switches, being careful not to break or change the position of the switches.



- Using 7/8" hole saw, drill two 7/8" holes into enclosure for conduits. Install fittings into holes. Pull the level switch wires into the enclosure and secure conduits in the fittings. Chlorinator images: Accu-Tab® 3070 shown on left; Accu-Tab® 1030 shown on right.



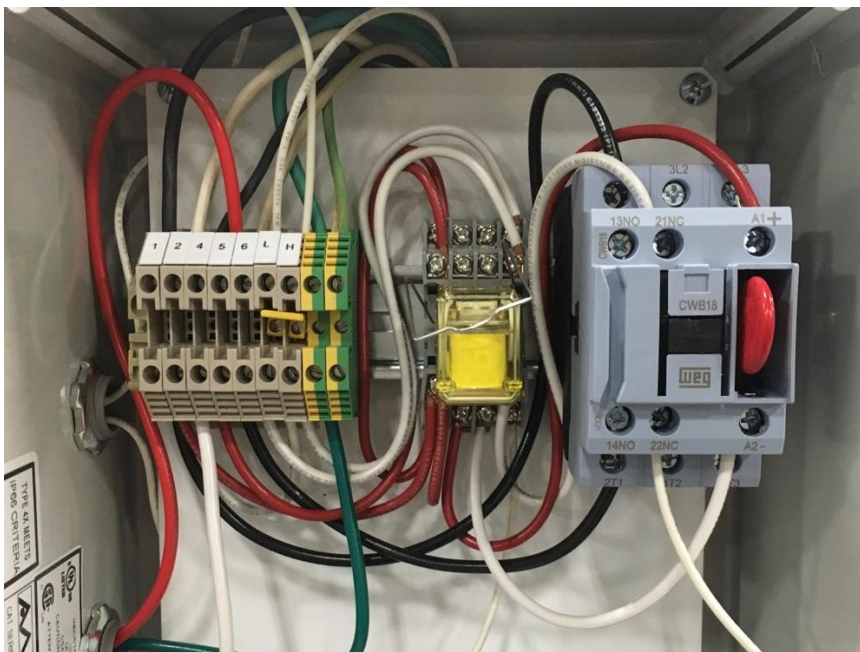
Wiring Components

Overflow Switch, Pump Contactor, Latching Relay, and Din Rail Socket

All components should fit inside existing electrical panel.



Overflow Switch



Completed wiring inside electrical panel

Wiring Diagrams

